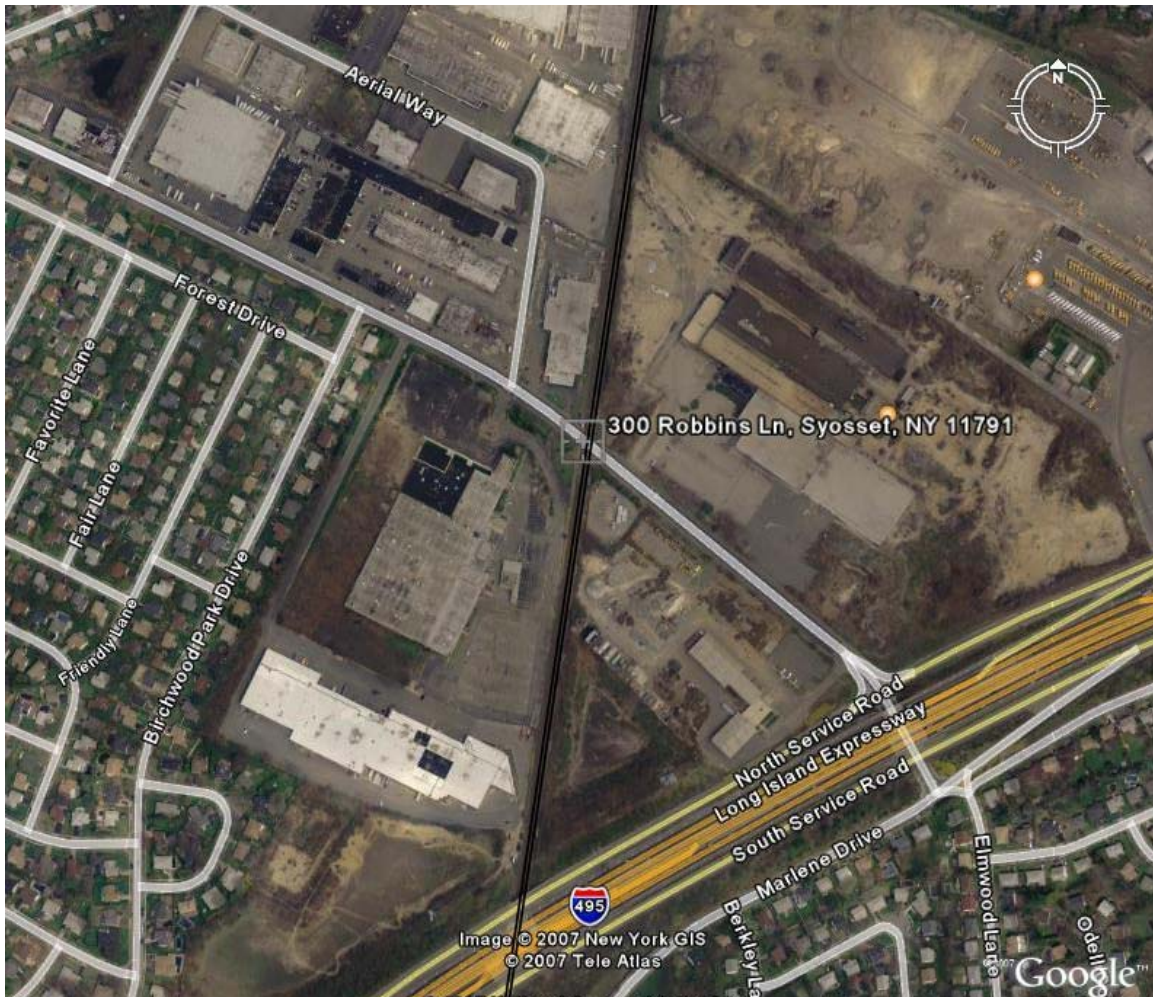


DRIVING DIRECTIONS
TO
300 ROBBINS LANE, SYOSSET, NY



FROM MANHATTAN (VIA MIDTOWN TUNNEL)

Take the Long Island expressway to Exit 40E – RT 25 E towards Syosset. Turn slight left onto NY-25 E / Jericho Turnpike. Turn right onto Robbins Lane. At the second traffic light make a right.

FROM MANHATTAN (VIA TRIBOROUGH BRIDGE)

Start out going NORTHEAST on RANDALLS IS. Turn SLIGHT LEFT. Turn SLIGHT LEFT. Merge onto I-278 E toward BRONX. Merge onto I-278 E / BRUKNER EXPY via EXIT 47 toward NEW HAVEN. Merge onto I-295 S toward THROGS NECK BR (Portions toll). Take the CROSS ISLAND PKWY exit toward EASTERN LI. Merge onto CROSS ISLAND PKWY S. Merge onto I-495 E / LONG ISLAND EXPY via EXIT 30E toward EASTERN LONG IS. Take the Rt-25 exit-EXIT 40E-towards

SYOSSET. Turn SLIGHT LEFT onto NY-25 E / JERICHO TURNPIKE. Turn RIGHT onto ROBBINS LANE. At the second traffic light make a right.

FROM NEW JERSEY

Take the George Washington Bridge. Keep right after bridge to take I-295 S via Exit 12 toward Throgs Neck Bridge (Portions toll). Take the Cross Island Parkway exit towards EASTERN LI. Merge onto CROSS ISLAND PKWY S. Merge onto I-495 E / LONG ISLAND EXPY via EXIT 30E toward EASTERN LONG ISLAND. Take the RT-25 E exit –EXIT 40E- toward Syosset. Turn slight left onto NY-25 E / JERICHO TURNPIKE. Turn right onto Robbins Lane. At the second traffic light make a right.

FROM NEW ENGLAND, WHITESTONE BRIDGE OR THROGS NECK BRIDGE

Take the Cross Island Parkway South ramp. Merge onto CROSS ISLAND PKWY S. Merge onto I-495 E / LONG ISLAND EXPY via EXIT 30E toward EASTERN LONG ISLAND. Take the RT-25 E exit –EXIT 40E- toward Syosset. Turn slight left onto NY-25 E / JERICHO TURNPIKE. Turn right onto Robbins Lane. At the second traffic light make a right.

PUBLIC TRANSPORTATION
TO
300 ROBBINS LANE, SYOSSET, NY

FROM LIRR

From Penn Station, take LIRR eastbound to the Syosset station. Take a taxicab from the station to 300 Robbins Lane.

From Greenport/Montauk, take LIRR westbound to the Syosset station. Take a taxicab from the station to 300 Robbins Lane.