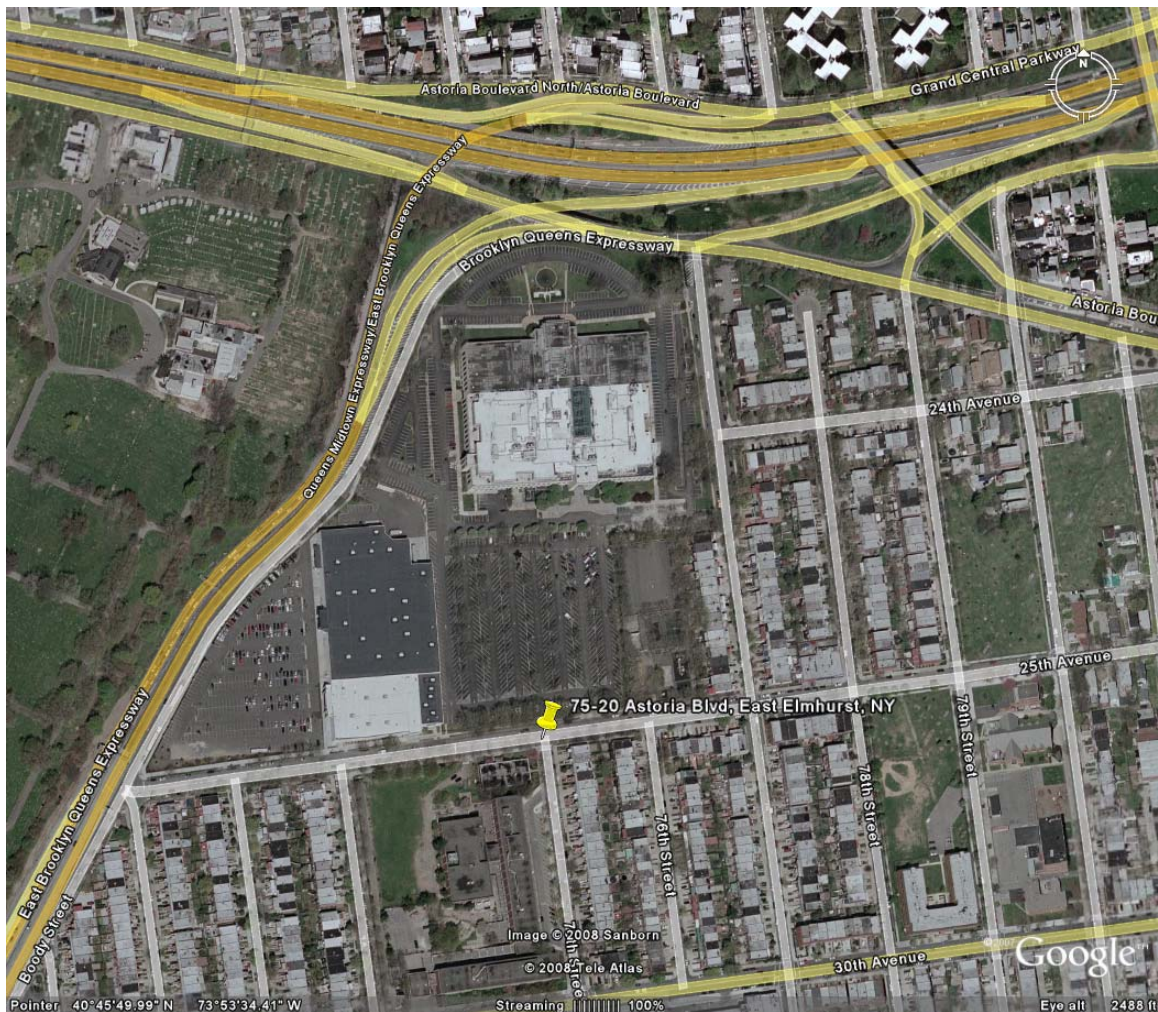


DRIVING DIRECTIONS  
TO  
BULOVA CORPORATE CENTER



FROM MANHATTAN (VIA MIDTOWN TUNNEL)

Take the Long Island Expressway to Brooklyn-Queens Expressway (LaGuardia Airport exit). Follow loop to the right onto the Brooklyn-Queens Expressway northbound. Continue on the Brooklyn-Queens Expressway towards LaGuardia Airport for approximately 2 miles. Exit onto Astoria Boulevard (East) and continue to 80<sup>th</sup> Street. Turn right onto 80<sup>th</sup> Street to 25<sup>th</sup> Avenue. Turn right onto 25<sup>th</sup> Avenue and continue past 77<sup>th</sup> Street. Make a right turn into parking area in front of the Bulova Corporate Center.

#### FROM MANHATTAN (VIA TRIBOROUGH BRIDGE)

Take the FDR Drive northbound, the Harlem River Drive southbound or 125<sup>th</sup> Street eastbound to the Triborough Bridge. Take the Triborough Bridge to Queens via the Grand Central Parkway. Continue on Grand Central Parkway, exiting onto Astoria Boulevard. Follow Astoria Boulevard to 80<sup>th</sup> Street. Turn right onto 80<sup>th</sup> Street to 25<sup>th</sup> Avenue. Turn right onto 25<sup>th</sup> Avenue and continue past 77<sup>th</sup> Street. Make a right turn into parking area in front of the Bulova Corporate Center.

#### FROM NEW JERSEY

Take the George Washington Bridge. Exit southbound onto either the Harlem River Drive or the Major Deegan Expressway heading towards the Triboro Bridge (as above).

#### FROM LONG ISLAND OR JFK INTERNATIONAL AIRPORT

Take the Long Island Expressway to the Grand Central Parkway westbound from Long Island, or take the Van Wyck Expressway northbound to Grand Central Parkway westbound from JFK International Airport. Continue westbound (passing LaGuardia Airport) and exit at Marine Air Terminal. Make a left onto 82<sup>nd</sup> Street (first traffic light). Continue on 82<sup>nd</sup> Street to 25<sup>th</sup> Avenue; turn right at 25<sup>th</sup> Avenue and continue past 77<sup>th</sup> Street. Make a right turn into parking area in front of the Bulova Corporate Center.

#### FROM NEW ENGLAND, WHITESTONE BRIDGE OR THROGS NECK BRIDGE

Take the Cross Island Parkway to the Whitestone Expressway. Follow the signs leading to Grand Central Parkway westbound. Pass LaGuardia Airport and exit at Marine Air Terminal. Make a left onto 82<sup>nd</sup> Street (first traffic light). Continue on 82<sup>nd</sup> Street to 25<sup>th</sup> Avenue; turn right at 25<sup>th</sup> Avenue and continue past 77<sup>th</sup> Street. Make a right into parking area in front of the Bulova Corporate Center.

PUBLIC TRANSPORTATION  
TO  
BULOVA CORPORATE CENTER

FROM MANHATTAN, QUEENS, OR BROOKLYN (VIA SUBWAY)

Take the IND E, F, R, or V train to the Roosevelt Avenue/Jackson Heights Station, or take the IRT #7 subway to the 74<sup>th</sup> Street/Broadway Station. Take the Q47 Bus northbound to the corner of 25<sup>th</sup> Avenue and 77<sup>th</sup> Street. Walk one block north to the Bulova Corporate Center.

FROM FLUSHING (VIA BUS)

Take the Q66 bus westbound from the corner of Roosevelt Avenue and Main Street or at Northern Boulevard and Main Street to 78<sup>th</sup> Street and Northern Boulevard. Transfer to the Q47 Bus northbound to the corner of 25<sup>th</sup> Avenue and 77<sup>th</sup> Street. Walk one block north to Bulova Corporate Center.

FROM LONG ISLAND CITY (VIA BUS)

Take the Q19A bus northbound from 21<sup>st</sup> Street and Queens Plaza North directly to Bulova Corporate Center.

FROM LONG ISLAND (VIA LIRR AND BUS)

Take the Long Island Railroad, North Shore Line to Flushing Station. Walk one half block east to Main Street. Take the Q66 Bus as described in the Flushing directions above.

Should you need further travel assistance, please call the Metropolitan Transit Authority at (718) 330-1234.